

## 1 Teaching

Accelerated reader?

Quality First Teaching supported by evidence informed CPD for teachers and support staff.

Virtual 'meet the teacher' sessions to aid transition

Baseline assessments carried out in September for all children

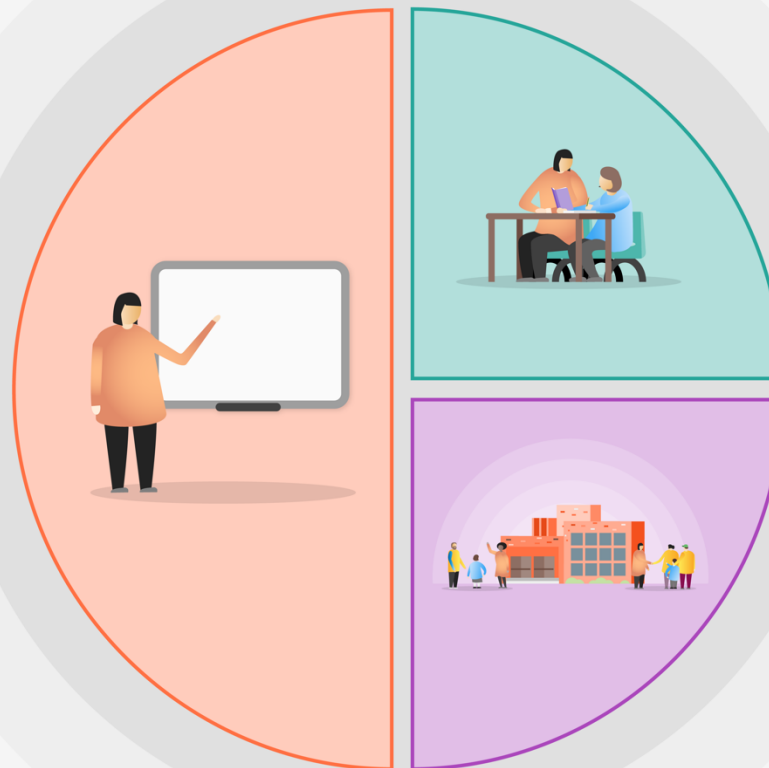
A broad and engaging curriculum

Development of a Maths Mastery approach supported by White Rose Maths resources (£1300).

Staff CPD on mental health and wellbeing (£300)

Handwriting teaching and learning resources (£300)

Deliberately reduce workload (e.g. reduced meetings) during the assessment cycle to aid staff wellbeing and enable high-quality responsive teaching.



## 2 Targeted academic support

After school small group and one to one tuition led by HLTAs and teachers

Deployment of TAs within the school day

Implementation of some interventions included on 'promising projects' list

## 3 Wider strategies

Communication with parents on school attendance

Extensive outdoor learning provision.

School staff used to cover classes rather than supply staff.

White Rose Maths workbooks used and can be taken home in event of closure

Accelerated reader introduced with e-library which will be useful if schools close